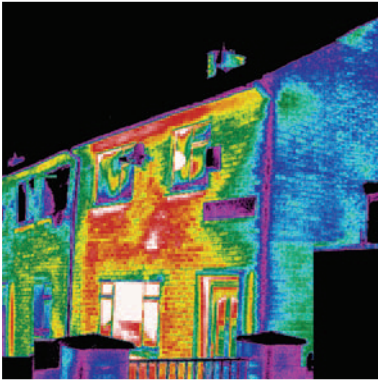
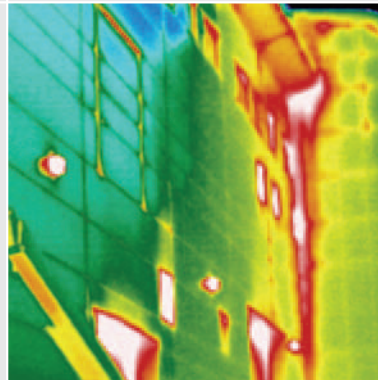


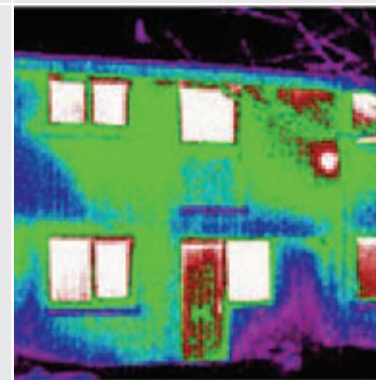
Energy Efficiency



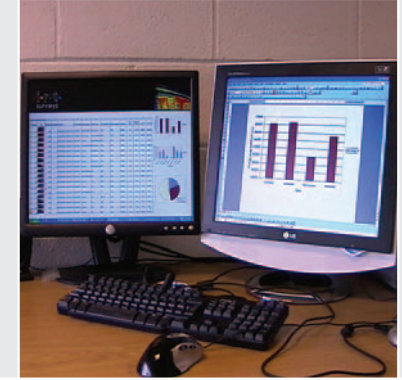
missing insulation in red



heat loss at the cladding junction in red



heat loss highlighted by green isotherm



electronic data allows statistical analysis

Energy Efficiency

Using specialist thermal imaging technology, energy loss from buildings can be assessed. Our experienced surveyors are equipped to provide a variety of surveys, from small individual properties to large-scale housing stock.

Tailored to specific needs, the energy loss from walls, lofts and around windows and doors can be analysed. You will see the results of your survey in a clear, concise report with hi-resolution, full colour, fully calibrated images.

Quantifiable Results

Our unique software can assess the amount of heat loss from your building and produce estimated additional energy, costs and CO₂ production from your defect.

Applications

- » Assessment of large scale housing stock
- » See heat loss from buildings
- » Testing of insulation to insure the quality of work
- » Prioritise refurbishment projects
- » Quantify heat loss in terms of energy, cost & CO₂

Call us now on **01382 228 700** to arrange your survey.

Case Study

With over 18,000 domestic properties, our client was unsure where to prioritise their resources with regards to insulation and refurbishment. IRT Surveys successfully surveyed all the properties quickly and well below projected costs for traditional testing. The surveys were conducted during dry winter evenings by a team of experienced thermographers. Each image was individually analysed to determine the insulation quality of the walls and the loft; heat loss from around windows and doors and identification of suspect delaminating render. Our software also calculated the additional energy costs & CO₂ associated with these anomalies. Overall, our findings highlighted over 68% of the properties were poorly insulated. The results were presented in an excel spreadsheet with a thumbnail image of each property along with a breakdown of the worst performing areas and streets.