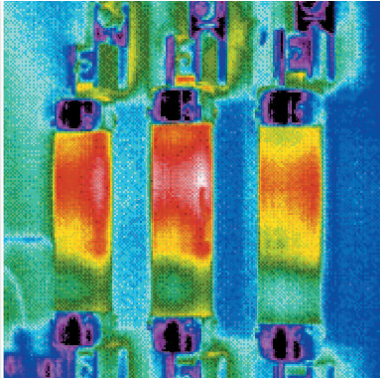


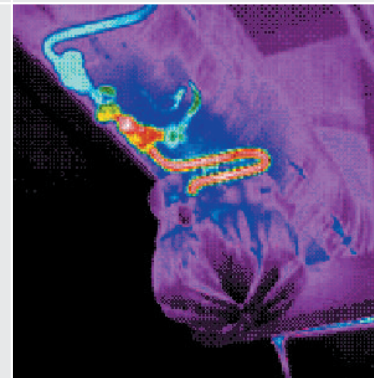
Predictive Maintenance



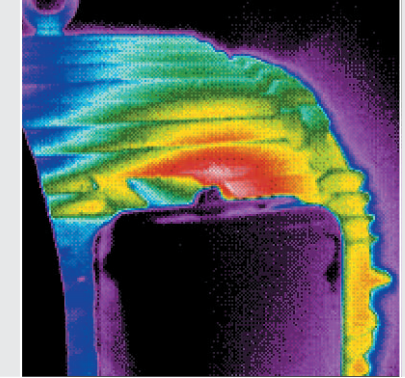
three phase fuses



overhead powerlines



steam trap analysis



overheating motor

Predictive Maintenance

Using the latest generation thermal imaging technology, this powerful non-contact technique allows fast and safe analysis of your distribution boards, electrical equipment and any plant you have on site.

You will see maintenance in a whole new light using our high resolution, full colour, fully calibrated images. You will receive a clear, concise report package with unrivalled imaging allowing you to program your maintenance and avoid costly downtime

Applications

There are numerous applications for IRT techniques in manufacturing. These include:

- » Detect overloaded circuits
- » Highlight poor/corroded connections
- » Oxidisation of high voltage switches
- » Overloaded pump and motors

The list is endless! If your processes involve electricity and heat – we can help you.

Call us now on **01382 228 700** to discuss your project.

Case Study

An annual IRT inspection of this factory in Glasgow found some overloaded circuits together with a few poor connections in various distribution boards. More significantly it also highlighted something far more serious. Here is what our client had to say:

“After having a thermographic survey carried out we investigated the findings and discovered a heavy duty power factor correction cable had no insulation on it after having shorted to earth. The cable remained live so we have averted a potentially deadly shock.”

- STEVE FAULKNER, FIELD PACKAGING